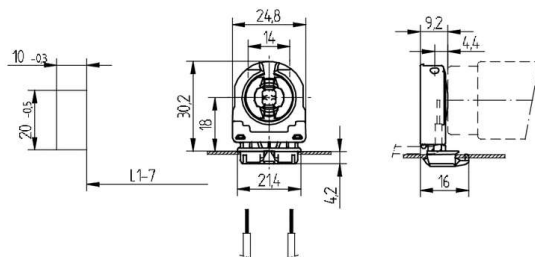


 Create pdf

## Lampholders and starter holders

26.306.1018

G13 Push in lampholders



L1-7: Recommended dimension - The distance between the cut-outs and the tolerance should be governed by the dimensions of the respective lamps and luminaires.

colour	pkg.	wt.	part no.
white	500	4 g	26.306.1018.50






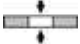

Approval: additional cULus (660W /600V)

Wiring: via snap in foot

Lamp centre: 18 mm  
Snap in foot 10 x 20 mm

Housing: PC  
Rotor: PBT

- Can be wired from above or below the mounting plate.
- A pair of lampholders provides a lamp length tolerance compensation of 3 mm

T 130	Tm 110	U out 500 V					 18 AWG 0.5 -1.0 mm <sup>2</sup>	 0.5 - 1.1	
-------	--------	----------------	---	---	---	---	---	--	---

Document generated on: Th, 9. February 2017 - 13:23